

Similar Students Measure Report Card - PILOT

La Vida Charter School

16201 N Highway 101, Willits, CA 95490
www.lavidaschool.org

Primary Contact: Ann Kelly

Authorizer: Willits Unified

Charter Expires: 6/30/2014

School Profile

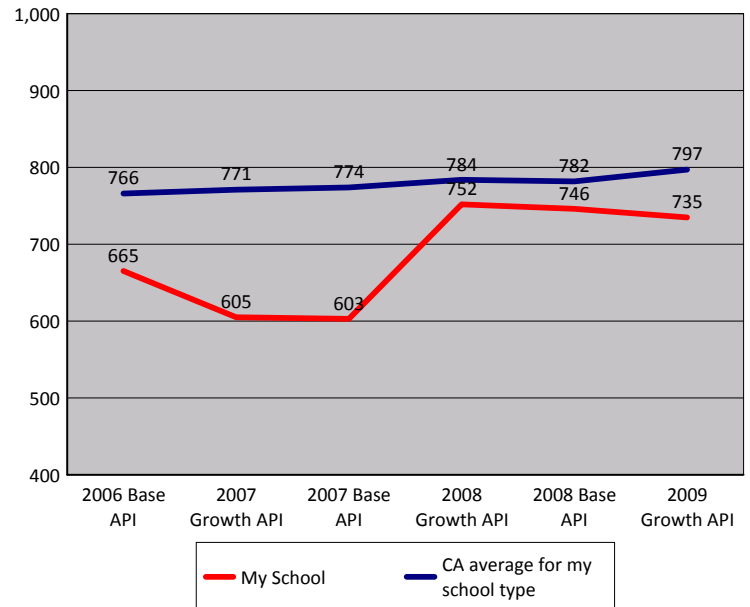
This 2009 demographic data is included in the Annual School Performance Prediction to describe some characteristics of your school's student body.

	My School	CA average for my school type (non-ASAM)
School Type*	ELEMENTARY	
# of Valid Test Scores	35	345
% Free/red price lunch enrollment	64	56
Average Parent Education Level	3.22	2.77
Response Rate for Parent Ed. Level	92	81
% English Language Learners	-	29
% Students with Disabilities	17	11
Student Mobility	72	93
% African American	0	7
% American Indian	11	1
% Asian	2	8
% Filipino	0	3
% Hispanic	4	48
% Pacific Islander	0	1
% White	81	31

* If your grade span extends beyond your indicated school type, see the School Type Categorization explanation on the Reference Guide.

API Results

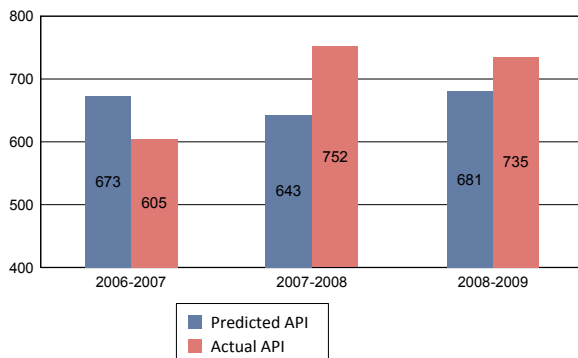
This shows your school's trend in API over the past three years, as well as the state average for your school type (non-ASAM).



Similar Students Measure (SSM) Results

Part 1: Annual School Performance Prediction

All schools receive an Annual School Performance Prediction based on its school profile, which is compared with Actual API over 3 years.



Your % Above or Below Predicted API

Year	% Above or Below Predicted API
2006-2007	-10%
2007-2008	17%
2008-2009	8%

Red: 10% or more below predicted
Yellow: Between 0 and 10% below predicted
Green: Above predicted

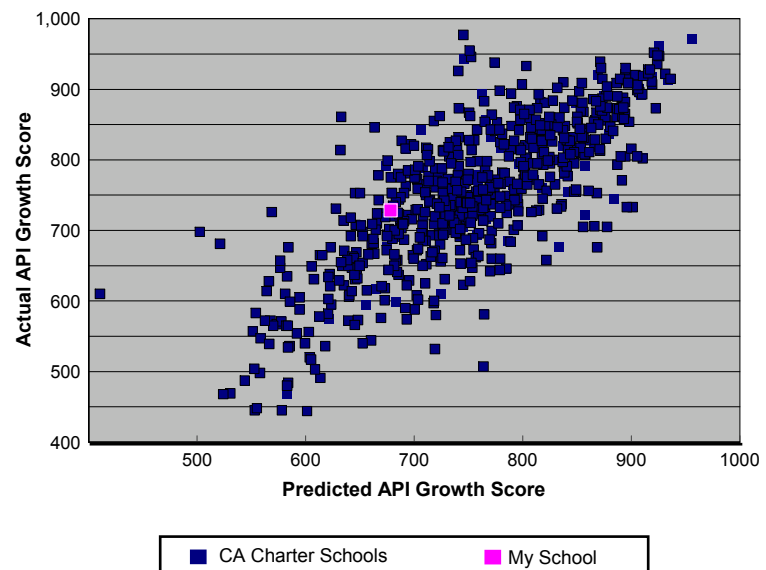
Part 2: Similar Students Measure (SSM)

Schools with an API of 10% or more below predicted for all years for which they have API data over the past three years would not meet SSM. Only schools 4 years and older with an API under 800 are considered for the SSM.

Meeting the Similar Students Measure for 2009? **NA**

Charter Comparisons

This graph shows the Annual School Performance Prediction and Actual API for all charter schools in California for 2009. Your school is marked by the pink dot.



■ CA Charter Schools ■ My School